

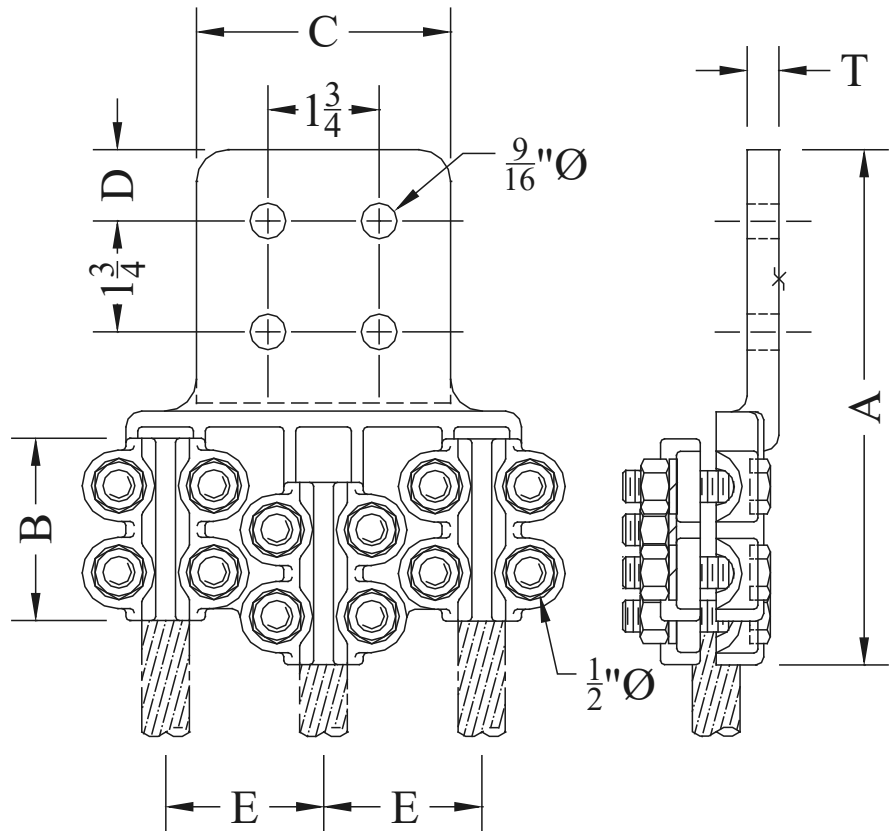
# BRONZE TERMINALS

## TYPE FNCT3

Straight Bolted  
Three Cables to Flat

Castings: Electrical Bronze  
Hardware: Silicon Bronze  
Options: See Page 194

Bronze alloy terminal with hex head clamping bolts for connecting three copper cables to flat. Clamping bolts have hex-stops for one-wrench installation. Flat pads have NEMA drilling.  
Angle connectors may be obtained by specifying desired angle.  
Example: FNCT390-20-4B



CATALOG NUMBER	CONDUCTOR RANGE	DIMENSIONS - INCHES						WEIGHT (POUNDS)	
		A	B	C	D	E	T		
FNCT3-12-4A	#6 STR - 250 MCM	7-7/8	2-1/2	3	5/8	2-3/8	1/2	7.40	
FNCT3-12-4B		7-7/8	2-1/2	4	1-1/8	2-3/8	1/2	7.40	
FNCT3-20-4A	1/0 SOL - 500 MCM	7-5/8	2-7/8	3	5/8	2-1/2	1/2	10.20	
FNCT3-20-4B		8-1/8	2-7/8	4	1-1/8	2-1/2	1/2	10.20	
FNCT3-34-4A	4/0 STR - 1000 MCM	8	3-1/2	3	5/8	2-3/4	1/2	14.10	
FNCT3-34-4B		9	3-1/2	4	1-1/8	2-3/4	1/2	14.10	
FNCT3-34-6B		8-7/8	3-1/2	6	1-1/8	2-3/4	1/2	14.10	
FNCT3-42-4A	1000 - 1500 MCM	9	4-1/2	3	5/8	3-1/4	7/8	22.40	
FNCT3-42-4B		9-3/16	4-1/2	4	1-1/8	3-1/4	7/8	23.50	
FNCT3-42-6B		9-3/16	4-1/2	6	1-1/8	3-1/4	3/4	25.60	
FNCT3-48-4B	1000 - 2000 MCM	CONTACT FACTORY FOR DETAILS							
FNCT3-48-6B									