

EHV STUD CONNECTORS

TYPE ASNFHV

Aluminum or Bronze
Stud to Flat

Type ASNFHV is designed for corona-free service at 345-500 KV when conductor tap is made in-line with the stud on EHV bushings. For conductor taps at 90° to stud, this fitting can be used at 345 KV maximum, provided that 90° hardware shields AA-1207 are used at the pad connection.

Aluminum contact threads are coated with a sealant, and fittings are shipped in clear plastic bags. Also available w/ 90° pad orientation
EXAMPLE: ASNFHV90-44-4B

TYPE ASNFHV

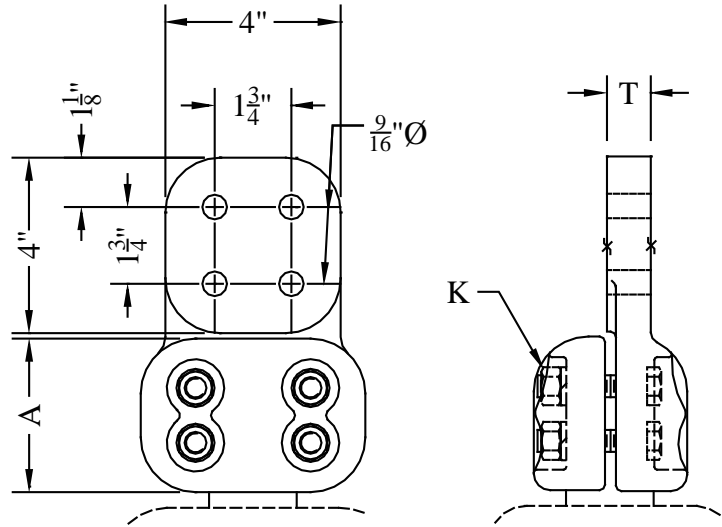
Castings: 356-T6 Aluminum
Hardware: Stainless Steel
Options: See page 185

TYPE ASNFHV-BR

Castings: Electrical Bronze
Hardware: Silicon Bronze
Contact Pad: Tinned Both Sides
Options: See page 185

Note: Pad mounting hardware and hardware shields must be ordered separately when required.

Use shield AA-1094 for in-line or AA-1207 for 90° angle.



CATALOG NUMBER	STUD DIA./THD.	DIMENSIONS-INCHES			WEIGHT (POUNDS)
		A	T	K	
ASNFHV-33-4B	1-1/8 - 12	3-1/2	3/4	1/2	3.10
ASNFHV-36-4B	1-1/4 - 12	3-1/2	3/4	1/2	3.25
ASNFHV-44-4B	1-1/2 - 12	3-1/2	1	1/2	5.10
ASNFHV-50-4B	1-3/4 - 12	3-1/2	1	1/2	5.30
ASNFHV-54-4B	2 - 12	3-1/2	1	1/2	5.50
ASNFHV-57-4B	2-1/4 - 12	3-1/2	1	1/2	5.70
ASNFHV-59-4B	2-1/2 - 12	3-1/2	1	1/2	6.00
ASNFHV-61-4B	3 - 12	3-1/2	1	5/8	6.25
ASNFHV-62-4B	3-1/2 - 12	4	1-1/8	5/8	6.50
ASNFHV-63-4B	4 - 12	4	1-1/8	5/8	6.75
ASNFHV-33-4B-BR	1-1/8 - 12	3-1/2	3/4	1/2	9.40
ASNFHV-36-4B-BR	1-1/4 - 12	3-1/2	3/4	1/2	9.75
ASNFHV-44-4B-BR	1-1/2 - 12	3-1/2	1	1/2	16.60
ASNFHV-50-4B-BR	1-3/4 - 12	3-1/2	1	1/2	17.20
ASNFHV-54-4B-BR	2 - 12	3-1/2	1	1/2	18.00
ASNFHV-57-4B-BR	2-1/4 - 12	3-1/2	1	1/2	19.10
ASNFHV-59-4B-BR	2-1/2 - 12	3-1/2	1	1/2	20.50
ASNFHV-61-4B-BR	3 - 12	3-1/2	1	5/8	22.00
ASNFHV-62-4B-BR	3-1/2 - 12	4	1-1/8	5/8	22.50
ASNFHV-63-4B-BR	4 - 12	4	1-1/8	5/8	27.00