

ALUMINUM MISCELLANEOUS

TYPE ABIR

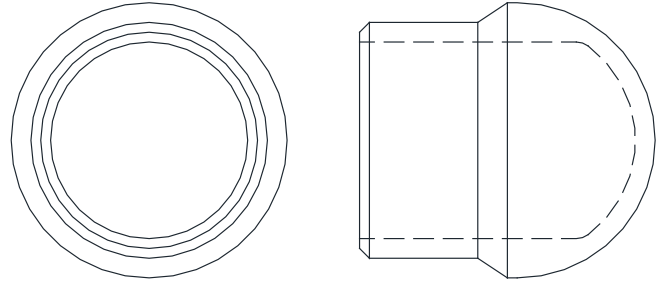
Welded Internal Fit
End Bell

Welded aluminum internal fit corona bell for 15-230 KV range pipe.

Add suffix (H) for SCH 80 pipe.
Example: ABIR-39H

Casting: 356-T6 Aluminum

CATALOG NUMBER	CONDUCTOR SIZE (NPS)
ABIR-39	1
ABIR-49	1-1/4
ABIR-53	1-1/2
ABIR-58	2
ABIR-60	2-1/2
ABIR-62	3
ABIR-63	3-1/2
ABIR-64	4
ABIR-67	5
ABIR-69	6



TYPE WFTIR

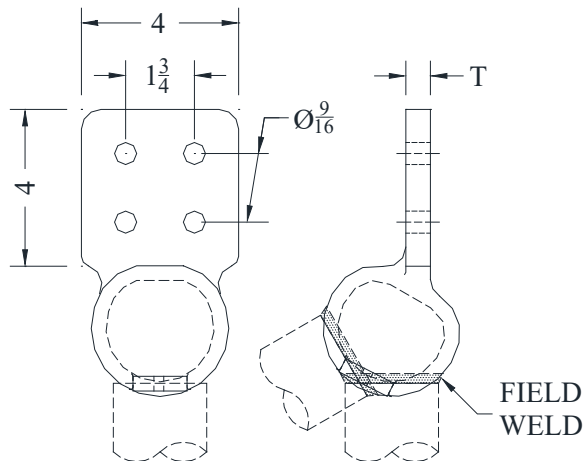
Angle Weldment
Terminal

Aluminum welded variable angle terminal.

Note that the angles are limited by the conductor size.

Consult manufacturer for further details or unlisted applications.

Casting: 356-T6 Aluminum



CATALOG NUMBER	PIPE SIZE	NPS	LIMITED ANGLE	NPS	LIMITED ANGLE	T
WFTIR-6062-4B	2-1/2" - 3" NPS	2-1/2"	0 - 55°	3"	0 - 60°	5/8"
WFTIR-6467-4B	4" - 5" NPS	4"	0 - 40°	5"	0 - 60°	1"