

EHV BUS COUPLERS

ALUMINUM • 345 - 500 KV

TYPE WXCF-CS

Weld Expansion Coupler

Castings: 356-T6 Aluminum
 Flexible Elements: 1100-0 Aluminum
 Shield rings: 6063-T6 Aluminum
 Alignment Guide: 6061-T6 Aluminum

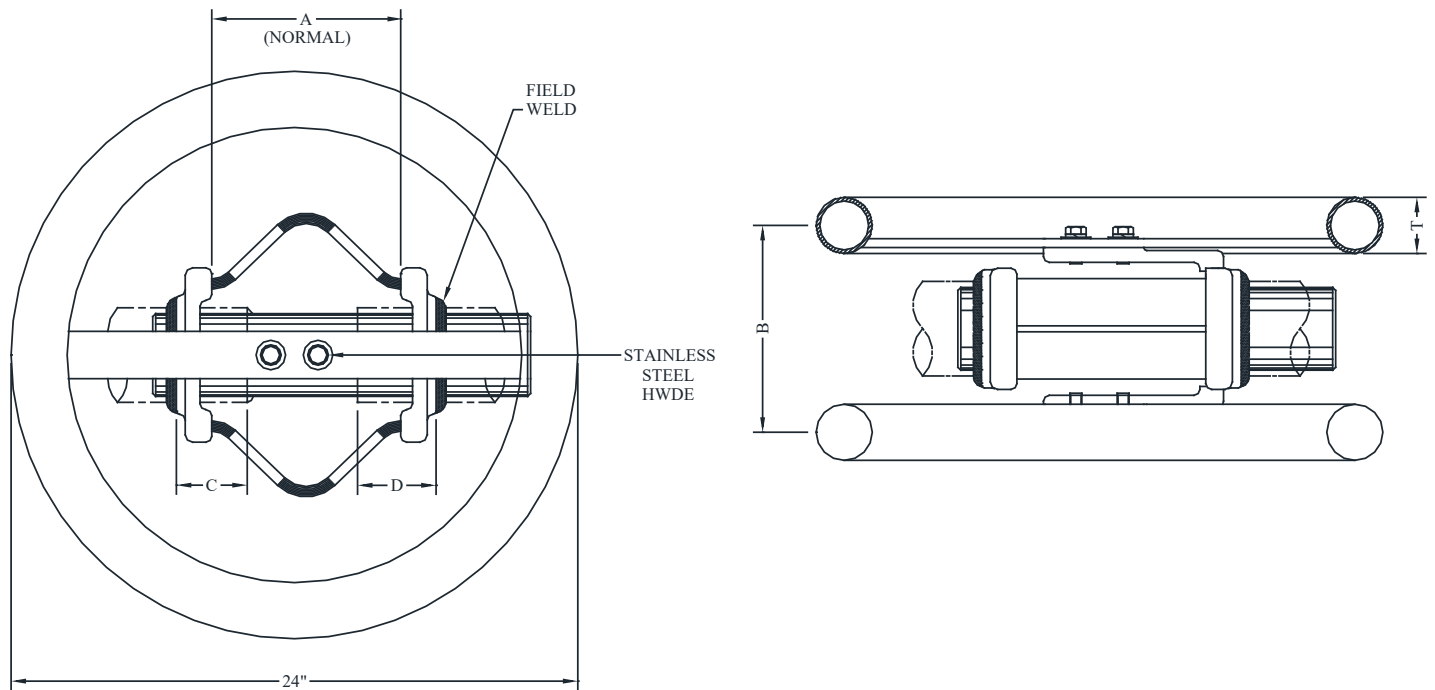
Type WXCF-CS1 and CS2 weld expansion couplers provide corona-free service at 345 KV and 500 KV respectively. Maximum temperature range is obtained by dividing the "X-factor" by the total bus length (feet) between fixed supports. Maximum bus length between fixed supports is obtained by dividing the "X-factor" by the required temperature range (°F). Dimensions are the same for both 345 and 500 KV except for "T" dimension.

345 KV: T = 1.7 in.

500 KV: T = 2.4 in.

It is good practice to install this type of fitting as close to a bus support as the station design allows.

(H) suffix denotes E.H.P.S.



CATALOG NUMBER		PIPE SIZE (NPS)	X-FACTOR	DIMENSIONS - INCHES			
345KV	500KV			A	B	C	D
WXCF-6262-CS1	WXCF-6262-CS2	3	32552	8	8	5	3
WXCF-6262H-CS1	WXCF-6262H-CS2	3 EHPS	32552				
WXCF-6363-CS1	WXCF-6363-CS2	3-1/2	39062	10	8-1/2	6	3-1/2
WXCF-6363H-CS1	WXCF-6363H-CS2	3-1/2 EHPS	39062				
WXCF-6464-CS1	WXCF-6464-CS2	4	39062	10	10	6-1/4	3-1/2
WXCF-6464H-CS1	WXCF-6464H-CS2	4 EHPS	39062				
WXCF-6767-CS1	WXCF-6767-CS2	5	39062	12	12	9	4
WXCF-6767H-CS1	WXCF-6767H-CS2	5 EHPS	39062				
WXCF-6969-CS1	WXCF-6969-CS2	6	39062	12	14	9	4
WXCF-6969H-CS1	WXCF-6969H-CS2	6 EHPS	39062				