

# EHV BUS COUPLERS

ALUMINUM • 345 KV

## TYPE WXCCF

Weld Expansion Coupler

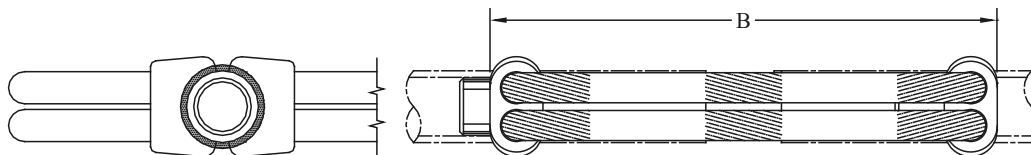
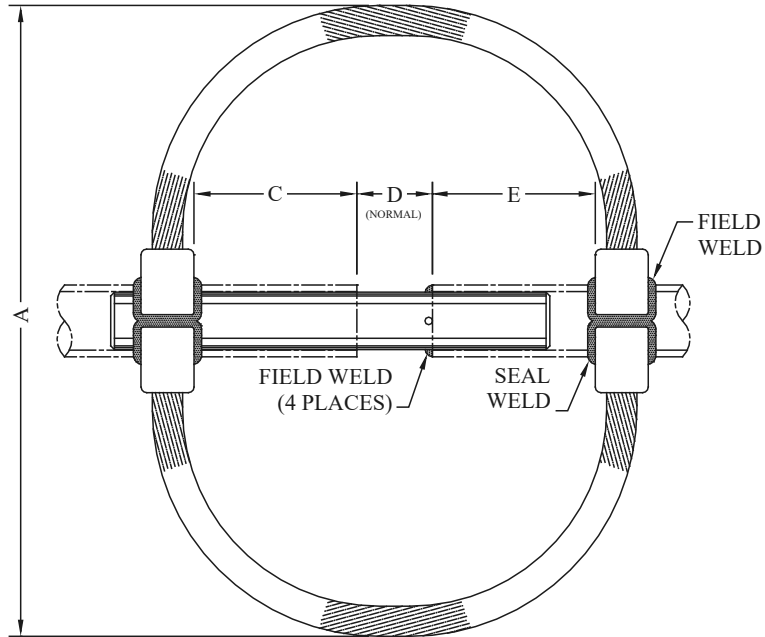
Castings: 356-T6 Aluminum  
 Alignment Guide: 6061-T6 Aluminum  
 Flexible Elements: Class A Str. Cable

Type WXCCF is self-shielding at voltages through 345 KV by the flexible elements, which serve as corona rings.

Bus length/temperature limits: To obtain temperature range that can be accommodated (°F), divide "X-factor" by total bus length (both sides) in feet. To obtain maximum total bus length-divide "X-factor" by required temperature range (°F).

Bus lengths are to nearest fixed support.

Suffix "H" Denotes EHPS.



CATALOG NUMBER	PIPE SIZE (NPS)	X-FACTOR	DIMENSION - INCHES				
			*A	*B	C	D	E
WXCCF-6060	2-1/2	26042	25	22-1/2	7	3	6
WXCCF-6060H	2-1/2 EHPS	26042	25	22-1/2	7	3	6
WXCCF-6262	3	26042	28	23-3/4	7	3	6
WXCCF-6262H	3 EHPS	26042	28	23-3/4	7	3	6
WXCCF-6363	3-1/2	32552	27	23	7-1/2	3-1/2	7
WXCCF-6363H	3-1/2 EHPS	32552	27	23	7-1/2	3-1/2	7
WXCCF-6464	4	32552	30	23-1/2	7-1/2	3-1/2	7
WXCCF-6464H	4 EHPS	32552	30	23-1/2	7-1/2	3-1/2	7
WXCCF-6767	5	39062	28	24	8	4	7-3/4
WXCCF-6767H	5 EHPS	39062	28	24	8	4	7-3/4
WXCCF-6969	6	39062	32	25	8-1/4	4	8-1/4
WXCCF-6969H	6 EHPS	39062	32	25	8-1/4	4	8-1/4

\*Normal