

ALUMINUM STUD CONNECTORS

TYPE ASFF

Stud to Flat

Castings: 356-T6 Aluminum
Hardware: Aluminum Alloy
Options: See page 174

All-aluminum stud connector for stud to flat NEMA pad. Contact pad is finished on both sides.

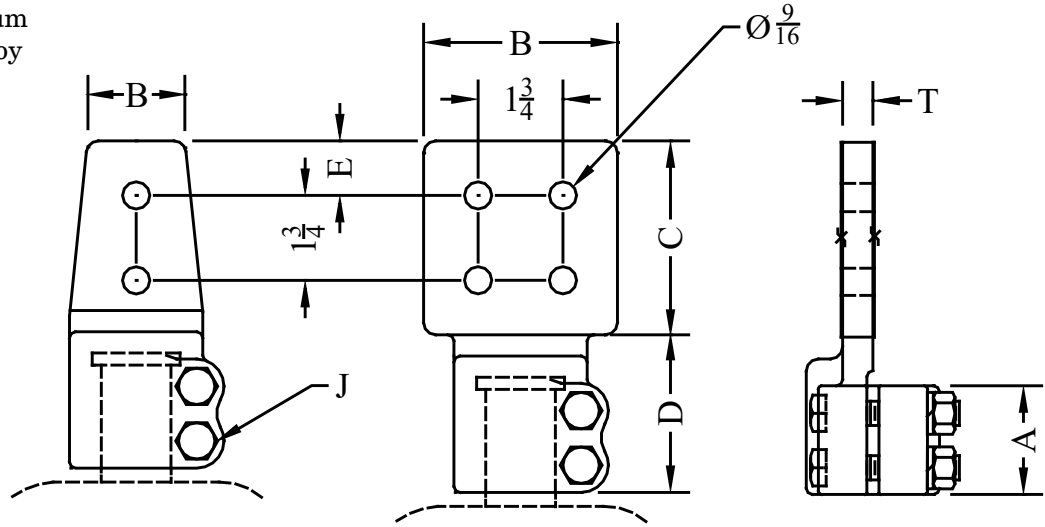


FIG. 1

FIG. 2

CATALOG NUMBER	STUD DIA./THD.	FIG. NO.	DIMENSIONS - INCHES							WEIGHT (POUNDS)
			A	B	C	D	E	J	T	
ASFF-27-2B	1 - 14	1	2-1/8	2	3	3	5/8	1/2	3/8	0.70
ASFF-27-4A		2		3	3		5/8		3/8	1.00
ASFF-33-2B	1-1/8 - 12	1	2-1/4	2	3	3-1/8	5/8	1/2	1/2	0.90
ASFF-33-4A		2		3	3		5/8		1/2	1.20
ASFF-33-4B		2		4	4		1-1/8		3/8	1.40
ASFF-36-2B	1-1/4 - 12	1	2-1/4	2	3	3-1/8	5/8	1/2	1/2	1.00
ASFF-36-4A		2		3	3		5/8		3/4	1.30
ASFF-36-4B		2		4	4		1-1/8		3/4	1.80
ASFF-44-2B	1-1/2 - 12	1	2-1/4	2	3	3-1/8	5/8	1/2	1/2	1.00
ASFF-44-4A		2		3	3		5/8		1/2	1.30
ASFF-44-4B		2		4	4		1-1/8		1/2	1.80
ASFF-50-4A	1-3/4 - 12	2	2-1/4	3	3	3-1/4	5/8	1/2	1/2	1.70
ASFF-50-4B		2		4	4		1-1/8		1/2	2.10
ASFF-54-4A	2 - 12	2	2-1/4	3	3	3-1/4	5/8	1/2	5/8	2.20
ASFF-54-4B		2		4	4		1-1/8		5/8	2.70
ASFF-57-4A	2-1/4 - 12	2	2-1/4	3	3	3-1/4	5/8	1/2	5/8	2.50
ASFF-57-4B		2		4	4		1-1/8		5/8	2.80
ASFF-59-4A	2-1/2 - 12	2	2-1/4	3	3	3-1/4	5/8	1/2	5/8	2.60
ASFF-59-4B		2		4	4		1-1/8		5/8	2.90
ASFF-61-4A	3 - 12	2	3-1/4	3	3	4-3/8	5/8	5/8	3/4	4.10
ASFF-61-4B		2		4	4		1-1/8		3/4	4.40
ASFF-63-4B	4 - 12	2	3-1/4	4	4	4-3/8	1-1/8	5/8	1	5.60