

EHV BUS COUPLERS

ALUMINUM • 345 - 500 KV

TYPE WFTD

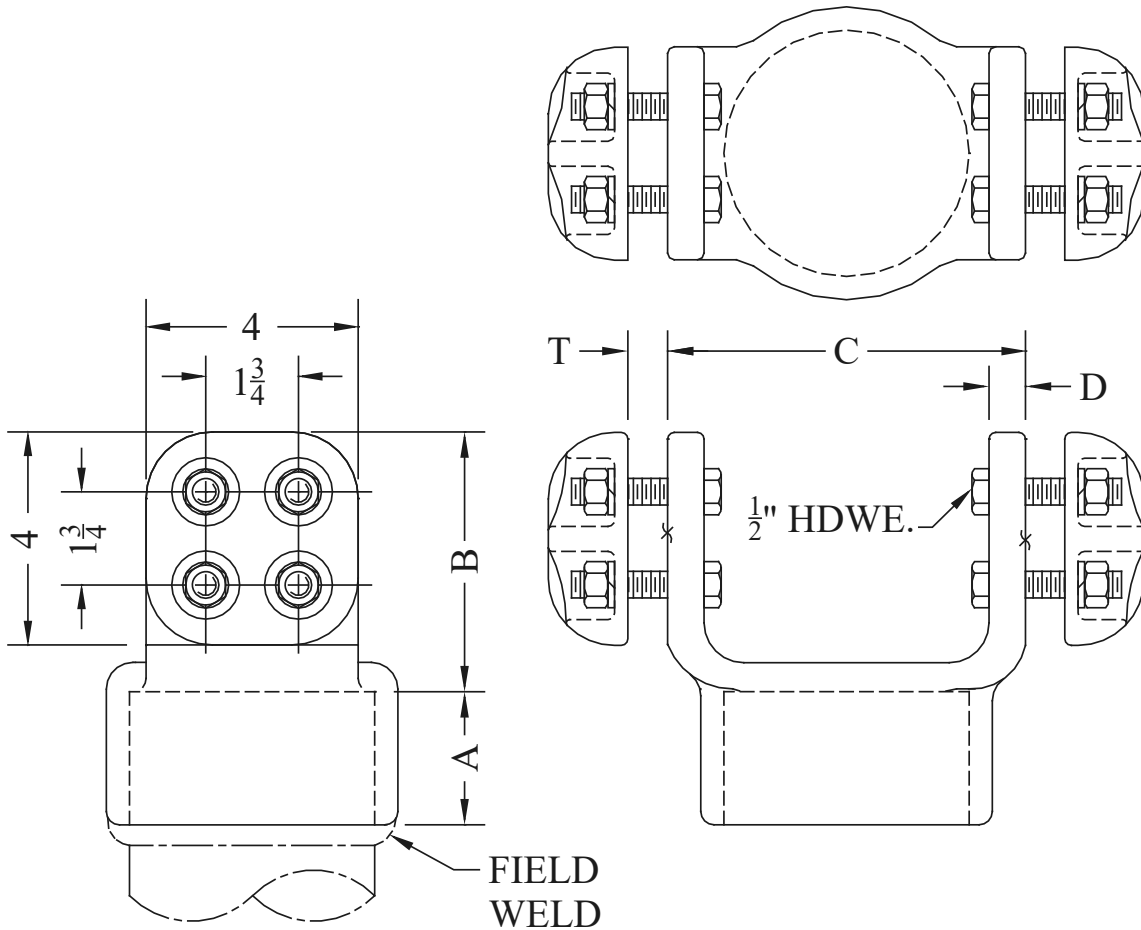
Weld Bifurcating - Pipe To Flat

Castings: 356-T6 Aluminum

Pad-Mtg. Hdwe.: Aluminum Alloy

Type WFTD is designed for corona-free service at the voltage levels shown, when used with two EHV compression terminals to form a bifurcating pipe-cable joint.

NOTE: (2) AA-1094 hardware shields are furnished with catalog #.



CATALOG NUMBER	PIPE SIZE (NPS)	MAX. KV	DIMENSIONS - INCHES					WEIGHT (POUNDS)
			A	B	C	D	T	
WFTD-58-4B	2	345	1-1/2	4-3/4	5	5/8	3/4	7.00
WFTD-60-4B	2-1/2	345	1-1/2	4-3/4	5	5/8	3/4	7.35
WFTD-62-4B	3	345	1-3/4	4-7/8	5-1/2	3/4	7/8	7.85
WFTD-63-4B	3-1/2	500	1-7/8	4-7/8	6	3/4	7/8	7.75
WFTD-64-4B	4	500	2-1/2	4-7/8	6-3/4	11/16	7/8	7.50
WFTD-67-4B	5	500	2-5/8	5	7-1/2	7/8	3/4	11.35
WFTD-69-4B	6	500	2-3/4	5	8-1/8	7/8	1	14.10

SEFCOR