

EHV BUS COUPLERS

ALUMINUM • 345 - 500 KV

TYPE WBCHV

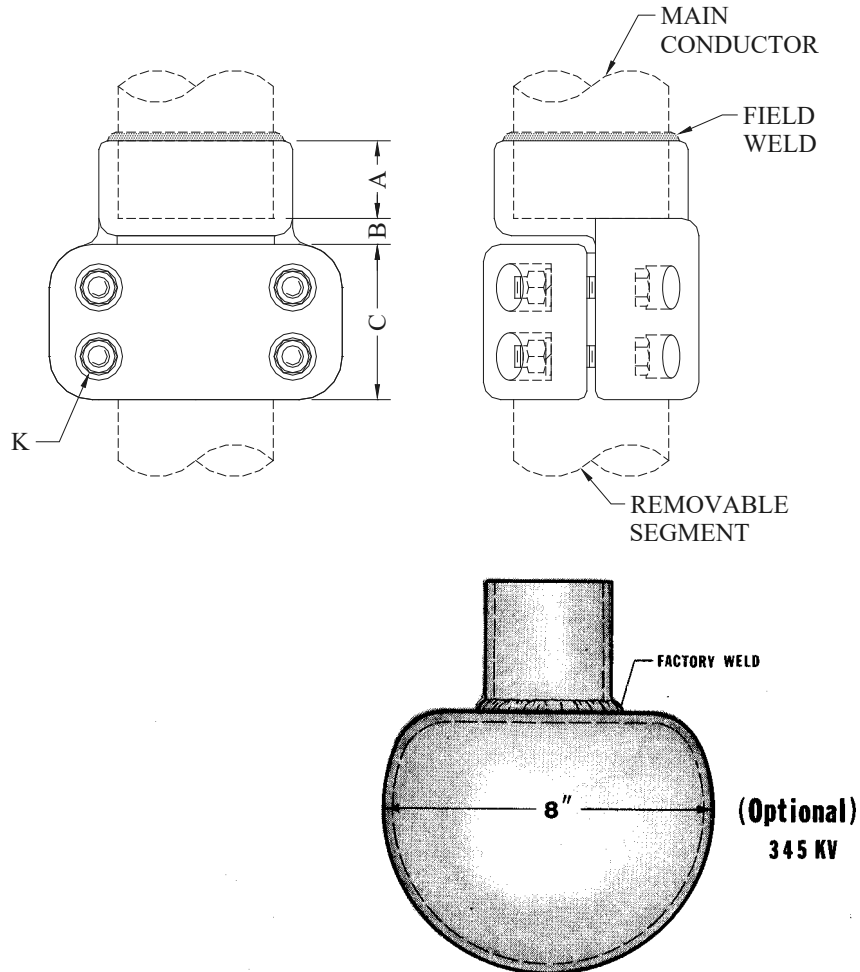
Weld- Bolted For Pipe

Castings: 356-T6 Aluminum

Clamping Hardware: Aluminum Alloy

Type WBCHV is designed for corona-free service at 345 KV and 500 KV as shown. Optional end bell is for 345 KV removable segment application. End bell is inserted when segment is removed. When required as part of the connector assembly, add suffix -EB to catalog number.

Example: WBCHV-67-EB



CATALOG NUMBER	PIPE SIZE (NPS)	MAX. KV	DIMENSIONS - INCHES			
			A	B	C	K
WBCHV-58	2	345	1-1/2	3/4	3-3/4	1/2
WBCHV-60	2-1/2	345	1-3/4	3/4	4	5/8
WBCHV-62	3	500	1-3/4	7/8	4-1/2	5/8
WBCHV-63	3-1/2	500	1-7/8	7/8	4-1/2	5/8
WBCHV-64	4	500	2-1/4	3/4	4-1/2	5/8
*WBCHV-67	5	500	2-7/8	3/4	8-1/4	5/8
*WBCHV-69	6	500	3	1-1/4	7	5/8

*Bolted Section Has Six Clamping Bolts

SEFCOR