

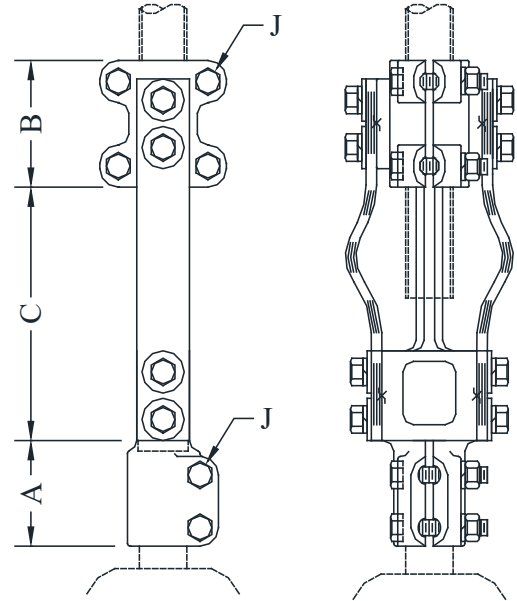
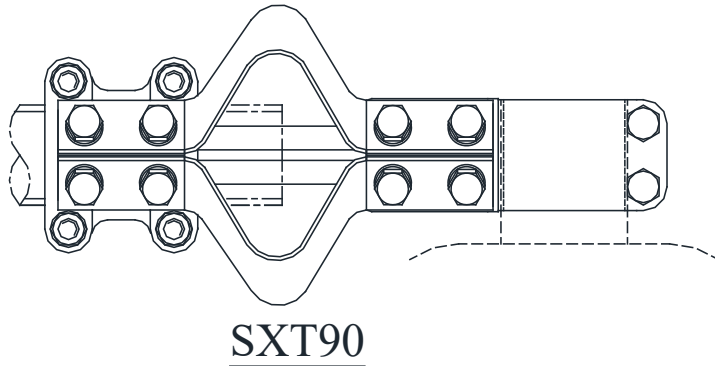
BRONZE STUD CONNECTORS

TYPE SXT

Expansion
Stud to Pipe

Castings: Electrical Bronze
Hardware: Silicon Bronze
Options: See Page 153

All-bronze expansion stud connector for copper stud to standard copper pipe.
Alignment guide accommodates standard or extra-heavy pipe.
Normally furnished with laminated copper straps.
For 90° connection, substitute SXT90 in table below.
Add suffix (H) for SCH 80 pipe.
Example: SXT-4458H



CATALOG NUMBER	STUD DIA./THD.	PIPE SIZE (NPS)	STRAPS	DIMENSIONS - INCHES				WEIGHT (POUNDS)
				A	B	C	J	
SXT-2730	1 - 14	3/4	2	2-1/8	3	6	3/8	7.35
SXT-2739		1	2	2-1/2	3	7-1/2	3/8	9.35
SXT-2749		1-1/4	2	2-1/4	3-1/2	6-1/4	1/2	12.25
SXT-2753		1-1/2	2	2-1/4	3-1/2	6-1/4	1/2	16.55
SXT-3330	1-1/8 - 12	3/4	2	2-1/8	3	6	3/8	9.35
SXT-3339		1	2	4-5/8	3	3-7/8	3/8	10.60
SXT-3349		1-1/4	2	2-3/8	3-1/2	8-1/2	1/2	15.15
SXT-3353		1-1/2	2	2-3/8	3-1/2	8-1/2	1/2	18.65
SXT-3358		2	4	2-7/8	3-1/2	8	1/2	19.45
SXT-3630	1-1/4 - 12	3/4	2	2	3	5-1/2	3/8	10.45
SXT-3639		1	2	2-3/4	3	4-3/4	3/8	12.10
SXT-3649		1-1/4	2	2-1/4	3-1/2	8-1/2	1/2	14.30
SXT-3653		1-1/2	2	2-1/4	3-1/2	8-1/2	1/2	16.35
SXT-3658		2	4	2-1/4	3-1/2	8-1/2	1/2	18.25

Continued on next page