

BRONZE STUD CONNECTORS

TYPE STT

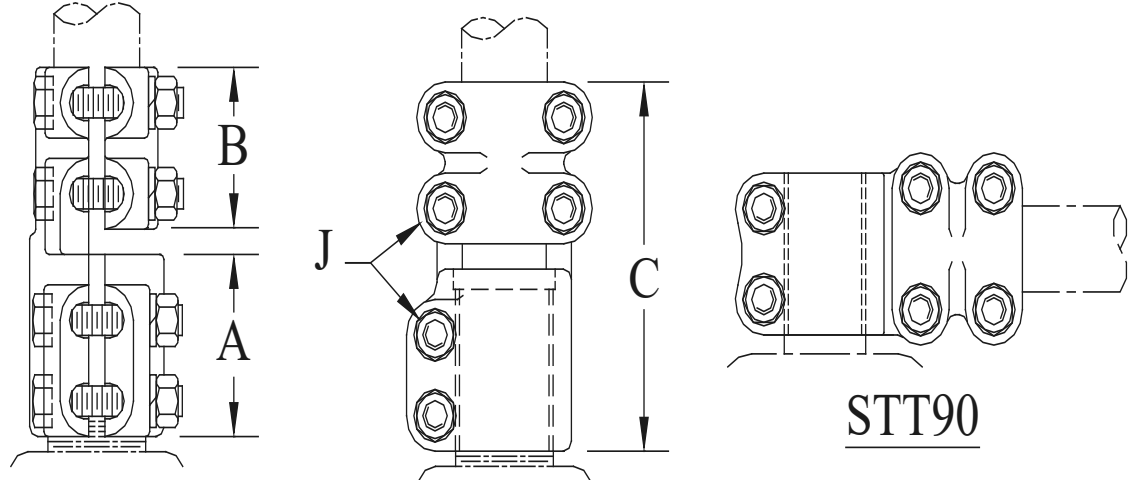
Stud to Pipe

All-Bronze stud connector for copper stud to standard copper pipe. For 90° connector, insert STT90 in place of STT in the table below.

Castings: Electrical Bronze

Hardware: Silicon Bronze

Options: See Page 154



| CATALOG NUMBER | STUD DIA./THD. | PIPE SIZE (NPS) | DIMENSIONS - INCHES | | | | WEIGHT (POUNDS) |
|----------------|----------------|-----------------|-----------------------------|-------|--------|-----|-----------------|
| | | | A | B | C | J | |
| STT-1021 | 1/2 - 13 | 1/2 | CONTACT FACTORY FOR DETAILS | | | | |
| STT-1030 | | 3/4 | 1-7/8 | 2 | 4 | 3/8 | 3.00 |
| STT-1821 | 3/4 - 16 | 1/2 | CONTACT FACTORY FOR DETAILS | | | | |
| STT-1830 | | 3/4 | 1-7/8 | 2 | 4 | 3/8 | 3.00 |
| STT-1839 | | 1 | 2 | 2 | 4-1/4 | 3/8 | 3.65 |
| STT-2730 | 1 - 14 | 3/4 | 2-1/8 | 3-1/2 | 6-3/8 | 1/2 | 5.70 |
| STT-2739 | | 1 | 2-1/8 | 2 | 4-3/8 | 3/8 | 3.15 |
| STT-2749 | | 1-1/4 | CONTACT FACTORY FOR DETAILS | | | | |
| STT-2753 | | 1-1/2 | 2-1/8 | 2-3/4 | 5-5/8 | 1/2 | 6.05 |
| STT-3330 | 1-1/8 - 12 | 3/4 | 2-1/8 | 2-3/8 | 5-5/16 | 3/8 | 5.60 |
| STT-3339 | | 1 | 2-1/8 | 2 | 4-1/4 | 3/8 | 6.15 |
| STT-3349 | | 1-1/4 | 2-1/4 | 2-3/4 | 5-5/8 | 1/2 | 6.00 |
| STT-3353 | | 1-1/2 | 2-5/8 | 2-3/4 | 5-1/2 | 1/2 | 5.85 |
| STT-3358 | | 2 | 2-1/8 | 3 | 5-7/8 | 1/2 | 7.00 |
| STT-3360 | | 2-1/2 | 2-1/8 | 3 | 5-3/4 | 1/2 | 8.90 |
| STT-3630 | 1-1/4 - 12 | 3/4 | 2-1/4 | 4-1/4 | 7-1/16 | 1/2 | 4.85 |
| STT-3639 | | 1 | CONTACT FACTORY FOR DETAILS | | | | |
| STT-3649 | | 1-1/4 | 2-3/4 | 2-3/4 | 5-5/8 | 1/2 | 5.95 |
| STT-3653 | | 1-1/2 | 2-1/2 | 2-3/4 | 5-3/8 | 1/2 | 6.35 |
| STT-3658 | | 2 | 2-3/4 | 3 | 5-7/8 | 1/2 | 7.55 |
| STT-3660 | | 2-1/2 | CONTACT FACTORY FOR DETAILS | | | | |

BRONZE STUD CONNECTORS

TYPE STT Continued

| CATALOG NUMBER | STUD DIA./THD. | PIPE SIZE (NPS) | DIMENSIONS - INCHES | | | | WEIGHT (POUNDS) |
|----------------|----------------|-----------------|-----------------------------|---------|---------|-----|-----------------|
| | | | A | B | C | J | |
| STT-4430 | 1-1/2 - 12 | 3/4 | 1-3/4 | 2 | 4-3/8 | 3/8 | 5.50 |
| STT-4439 | | 1 | 2-1/4 | 2 | 4-9/16 | 3/8 | 3.40 |
| STT-4449 | | 1-1/4 | 2-3/4 | 2-3/4 | 5-5/8 | 1/2 | 6.30 |
| STT-4453 | | 1-1/2 | 2-1/8 | 2-13/16 | 5-1/2 | 1/2 | 6.55 |
| STT-4458 | | 2 | 2-3/4 | 3 | 5-7/8 | 1/2 | 7.60 |
| STT-4460 | | 2-1/2 | CONTACT FACTORY FOR DETAILS | | | | |
| STT-5439 | 2 - 12 | 1 | CONTACT FACTORY FOR DETAILS | | | | |
| STT-5449 | | 1-1/4 | 2-3/8 | 2-3/4 | 6 | 1/2 | 10.65 |
| STT-5453 | | 1-1/2 | CONTACT FACTORY FOR DETAILS | | | | |
| STT-5458 | | 2 | | | | | |
| STT-5460 | | 2-1/2 | | | | | |
| STT-5949 | 2-1/2 - 12 | 1-1/4 | CONTACT FACTORY FOR DETAILS | | | | |
| STT-5953 | | 1-1/2 | | | | | |
| STT-5958 | | 2 | | | | | |
| STT-5960 | | 2-1/2 | | | | | |
| STT-5962 | | 3 | | | | | |
| STT-6149 | 3 - 12 | 1-1/4 | CONTACT FACTORY FOR DETAILS | | | | |
| STT-6153 | | 1-1/2 | | | | | |
| STT-6158 | | 2 | | | | | |
| STT-6160 | | 2-1/2 | | | | | |
| STT-6162 | | 3 | 2-3/4 | 3-1/4 | 6-11/16 | 5/8 | 19.00 |

