

# BRONZE STUD CONNECTORS

## TYPE SFFT Continued

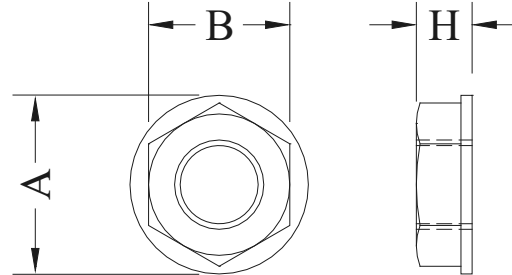
CATALOG NUMBER	STUD DIA./THD.	PIPE SIZE (NPS)	DIMENSIONS - INCHES						WEIGHT (POUNDS)
			A	B	C	J	T	W	
SFFT-4430	1-1/2 - 12	3/4	2	6	9-3/4	3/8	1/8	3	5.65
SFFT-4439		1	2	5-1/8	10	3/8	3/16	3	7.45
SFFT-4449		1-1/4	2-3/4	6-1/2	10-3/4	1/2	1/4	3	9.50
SFFT-4453		1-1/2	2-3/4	7	11	1/2	3/8	3	13.55
SFFT-4458		2	3-1/2	7	12-1/2	1/2	1/2	3	17.45
SFFT-4460		2-1/2	3-1/2	7	12-1/4	1/2	1/2	3	18.25
SFFT-4462		3	4	7-1/4	13-7/8	5/8	1/2	4	31.10
SFFT-5449	2 - 12	1-1/4	3	7	12-7/16	1/2	3/8	4	16.00
SFFT-5453		1-1/2	2-13/16	7	12-5/8	1/2	3/8	4	17.80
SFFT-5458		2	3-1/2	7-3/8	13-1/4	1/2	3/8	4	19.70
SFFT-5460		2-1/2	3-1/2	6-3/4	13-3/4	1/2	1/2	4	29.70
SFFT-5462		3	4	6-3/4	14-1/4	5/8	5/8	4	40.75

## TYPE SHN

Contact Nut for Threaded Stud

Electrical bronze contact nut used in pairs for connecting types SFFT, SFFT90, ASFFT, and ASFFT90 to threaded copper stud. For stud threads other than listed, change last two digits of catalog number to number of threads required.

Casting: Electrical Bronze



CATALOG NUMBER	STUD DIA./THD.	DIMENSIONS - INCHES			WEIGHT (POUNDS)
		A	B	H	
SHN-14-18	5/8 - 18	1-1/2	1-1/4	5/16	0.25
SHN-18-16	3/4 - 16	2	1-5/8	3/4	0.50
SHN-21-14	7/8 - 14	2	1-3/4	1/2	0.40
SHN-27-14	1 - 14	2	1-5/8	3/4	0.50
SHN-33-12	1-1/8 - 12	2-1/4	1-13/16	13/16	0.50
SHN-36-12	1-1/4 - 12	2-1/2	2	7/8	0.75
SHN-44-12	1-1/2 - 12	3	2-3/8	15/16	1.35
SHN-50-12	1-3/4 - 12	3-1/4	2-5/8	1	2.00
SHN-54-12	2 - 12	3-3/4	3-1/8	1-1/8	2.50
SHN-57-12	2-1/4 - 12	4	3-3/8	1-1/8	2.75
SHN-59-12	2-1/2 - 12	4-1/4	3-5/8	1-1/8	3.00
SHN-61-12	3 - 12	4-1/2	4	1-1/8	3.50