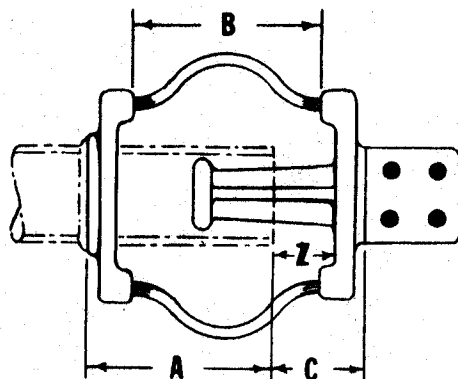


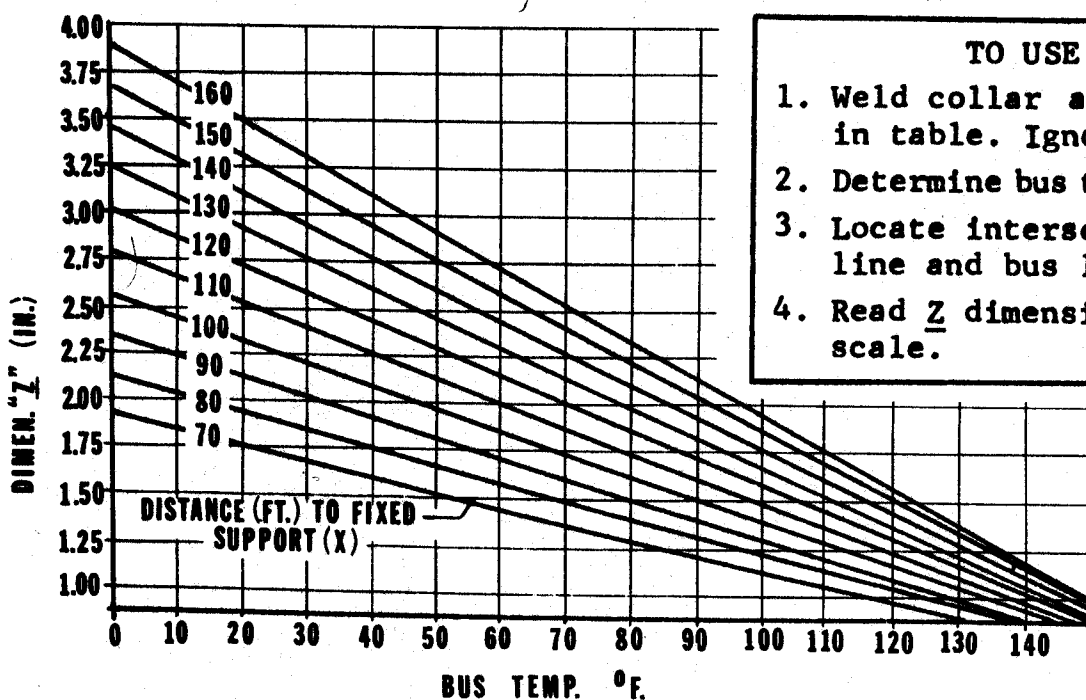
INSTALLATION INSTRUCTIONS
SEFCOR Types WFXT & WFXTC-V
Weld Expansion Terminals



For installation at bus temperatures of 20°F to 120°F, position the tubing in accordance with the dimensions in the table below. When installed in accordance with these dimensions, the connector will accommodate the total movement in *X feet of tubing within a bus temperature range from -20°F to 160°F.

Tubing S.P.S.	Catalog Size Designation	Dimensions in Inches			
		A	B	C	*X
1	39	6	5-3/4	2-3/8	70 ft.
1-1/4	49	5-1/2	6	2-3/4	70 ft.
1-1/2	53	5-1/2	6-1/4	3-1/8	81 ft.
2	58	5-1/2	6-1/4	3-1/2	81 ft.
2-1/2	60	5-1/2	6-1/2	4	93 ft.
3	62	6	6-1/2	3-3/4	93 ft.
3-1/2	63	6	6-1/2	3-3/4	93 ft.
4	64	6	6-1/2	3-3/4	93 ft.
5	67	6-3/4	7-1/8	4	93 ft.
6	69	7-3/8	8	4-1/2	93 ft.

*X is maximum distance to nearest fixed support. When bus span exceeds this dimension, installation should be in accordance with the temperature chart below.



TO USE CHART:

1. Weld collar at dimension "A" in table. Ignore B & C dimen.
2. Determine bus temperature (°F).
3. Locate intersection of temp. line and bus length (X).
4. Read Z dimension on left-hand scale.