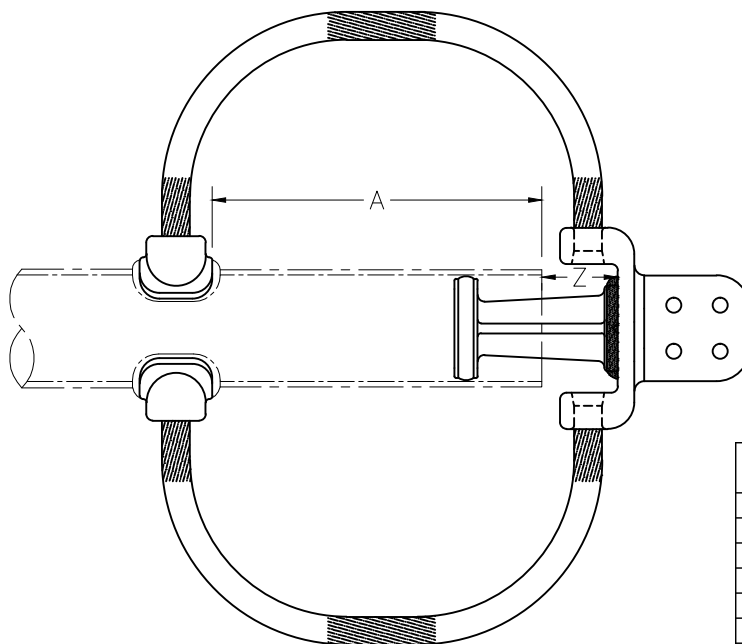


INSTALLATION INSTRUCTIONS FOR TYPE "WFCCV" & "WFCCH"



Catalog Size	Pipe Size (SPS)	A (in.)
58	2	12
60	2 1/2	12
62	3	12
63	3 1/2	12 1/2
64	4	12 1/2
67	5	18 1/2
69	6	21 1/8

Distance (ft.) to Fixed Support	Z (in.) at Specified Installation Bus Temperature													
	-10°F	0°F	10°F	20°F	30°F	40°F	50°F	60°F	70°F	80°F	90°F	100°F	110°F	120°F
80	2 5/8	2 1/2	2 3/8	2 1/4	2 1/8	2	1 7/8	1 3/4	1 5/8	1 1/2	1 3/8	1 1/4	1 1/8	1
90	3	2 3/4	2 5/8	2 1/2	2 3/8	2 1/4	2 1/8	2	1 7/8	1 3/4	1 1/2	1 3/8	1 1/4	1 1/8
100	3 1/4	3 1/8	2 7/8	2 3/4	2 5/8	2 1/2	2 1/4	2 1/8	2	1 7/8	1 3/4	1 1/2	1 3/8	1 1/4
110	3 1/2	3 3/8	3 1/8	3	2 7/8	2 5/8	2 1/2	2 3/8	2 1/8	2	1 7/8	1 5/8	1 1/2	1 3/8
120	3 7/8	3 5/8	3 1/2	3 1/4	3 1/8	2 7/8	2 3/4	2 1/2	2 3/8	2 1/8	2	1 3/4	1 5/8	1 3/8
130	4 1/8	3 7/8	3 3/4	3 1/2	3 1/4	3 1/8	2 7/8	2 3/4	2 1/2	2 1/4	2 1/8	1 7/8	1 3/4	1 1/2
140	4 3/8	4 1/8	4	3 3/4	3 1/2	3 3/8	3 1/8	2 7/8	2 5/8	2 1/2	2 1/4	2	1 7/8	1 5/8
150	4 3/4	4 1/2	4 1/4	4	3 3/4	3 1/2	3 1/4	3 1/8	2 7/8	2 5/8	2 3/8	2 1/8	1 7/8	1 3/4
160	5	4 3/4	4 1/2	4 1/4	4	3 3/4	3 1/2	3 1/4	3	2 3/4	2 1/2	2 1/4	2	1 3/4

Weld the collars at the "A" dimension from the end of the pipe.

Where the maximum distance to the nearest fixed support is less than 80 feet, install the terminal at a "Z" dimension of 2-1/2".

When the maximum distance to the nearest fixed support is 80 feet or greater, consult the table. Determine the bus temperature and use the corresponding "Z" dimension.

When installed at the listed dimensions, the connector will accommodate a temperature range between -20°F (-30°C) and 180°F (80°C) for a distance to the closest fixed support up to and including the maximum listed.

If an application is outside of the specified range, contact the factory (770-227-8297) for more information

No.	By	Date	Revision



ACF 2/17/14