

SEFCOR, INC.

Power Connector Specialists



Substation Products REFERENCE GUIDE

“Making Connections Since 1971”

SEFCOR, INC.

A TRADITION OF EXCELLENCE

Since 1971, **SEFCOR** has built a reputation as a supplier of quality power connectors with short lead times at competitive prices. With sales offices located coast-to-coast, **SEFCOR** has quickly become one of the nation's leading suppliers to the Electric Power Industry.

SEFCOR connectors are designed in accordance with the latest industry NEMA and ANSI standards. Our patterns and molds are made under our control in accordance to our exacting standards, and are carefully tested, checked and inspected rigorously to insure conformance before production begins.

Fittings are produced by independent foundries highly skilled and specialized in the manufacture of aluminum and bronze castings. Casting inspection, machining, welding, and assembly are completed in our Griffin, Georgia facility. The connectors are cleaned, brightened and prepared for shipment. All high-voltage fittings are buffed to a fine finish to insure corona-free operation. Final inspection is performed on 100% of all items prior to being released for shipment.

SEFCOR DESIGNS SOLUTIONS

With over 25,000 standard and special designs available, **SEFCOR** already has a connector for most applications. However, when unique situations call for specially designed items we stand ready to serve our customers.

SEFCOR has been designing solutions for electric utilities, both large and small, for over 30 years. Our customer designed connectors are available in large and small quantities to support both transmission and distribution systems. Best of all, **SEFCOR** design solutions are available regardless of the size of your need, from one to one thousand or more, with competitive pricing and reliable on-time deliveries.

SEFCOR FABRICATES

SEFCOR offers specialized on-site welding and fabrication services for substation construction. "A" Frames and other components can be prefabricated to your specifications to reduce installation time, labor and save money.

TABLE OF CONTENTS

STANDARDS.....	3
ALUMINUM.....	4
EHV.....	9
BRONZE.....	14
ADDITIONAL.....	19
STRAIN HARDWARE.....	20
SPECIALTY DESIGNS.....	21

STANDARDS

OPTIONS

A()	FACTORY SET ANGLE	M72	STAINLESS STEEL HARDWARE WITH BRONZE NUT
AG	SILVER-PLATED ENTIRE ASSEMBLY	MB	WITH TONGUE MOUNTING HARDWARE
BP	BLANK PAD-NO HOLES IN CONTACT PAD	S	SHORT BARREL
CCN	SUPPLIED WITH CONTACT NUTS	P	PIN MOUNTING HARDWARE
CNS	SUPPLIED WITH CAP NUTS	SE	STATIC ELIMINATOR SPRING
E	EXTENSION PAD	SND	TIN-PLATED ENTIRE ASSEMBLY
EHV	EXTRA HIGH VOLTAGE APPLICATION	SP	SPECIAL REQUIREMENT, REFER TO FACTORY
ETP	ELECTRO TIN-PLATED	SS	STAINLESS STEEL HARDWARE
FF	FINISHED BOTH SIDES OF CONTACT PAD	T0	SMOOTH STUD BORE - NO THREADS
GS	GALVANIZED STEEL HARDWARE	T()	SPECIAL STUD THREADS
GR5	GRADE 5 GALV STEEL BOLT- GALV HARDWARE	TP	TIN-PLATED CONTACT PAD
H	HEAVY (EXTRA THICKNESS CONTACT PAD)	TTP	TERMINAL SUPPLIED WITH BI-METALLIC TRANSITION PLATE
H	INTERNAL FIT WHEN SCH80 PIPE USED	WOH	WITHOUT HARDWARE
HS	SUPPLIED WITH HARDWARE SHIELD		

STANDARD STUD SIZES			
REF	DIM	REF	DIM
10	1/2"	57	2-1/4"
14	5/8"	59	2-1/2"
18	3/4"	61	3"
21	7/8"	62	3-1/2"
27	1"	63	4"
33	1-1/8"	64	4-1/2"
36	1-1/4"	65	5"
44	1-1/2"	66	5-1/2"
50	1-3/4"	68	6"
54	2"		

STANDARD PIPE SIZES			
REF	DIM	REF	DIM
11	1/4"	62	3"
16	3/8"	63	3-1/2"
21	1/2"	64	4"
30	3/4"	65	4-1/2"
39	1"	67	5"
49	1-1/4"	69	6"
53	1-1/2"	70	8" O.D.
58	2"	71	8"
60	2-1/2"		

STANDARD PAD SIZES	
REF	DIM
2A	1-1/2" X 3"
2B	2" X 3"
4A	3" X 3"
4B	4" X 4"
6A	5" X 4"
6B	6" X 4"

*NON-STANDARD OPTIONS AVAILABLE
 **METRIC SMOOTH AND METRIC
 THREADED OPTIONS AVAILABLE -
 CONTACT FACTORY

ALUMINUM BUS SUPPORTS

WELDED PIPE



ASWH



WCTI



WRTI



WTSI



WVTI



WXCTO

BOLTED PIPE



ACSTI



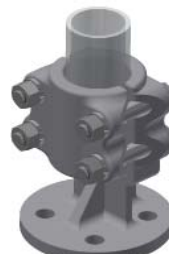
ACTI



ASTI



ASTI-R



AVTI



AXCTO

BOLTED PIPE

BOLTED CABLE



ASCRI



AVCA



AVCA2

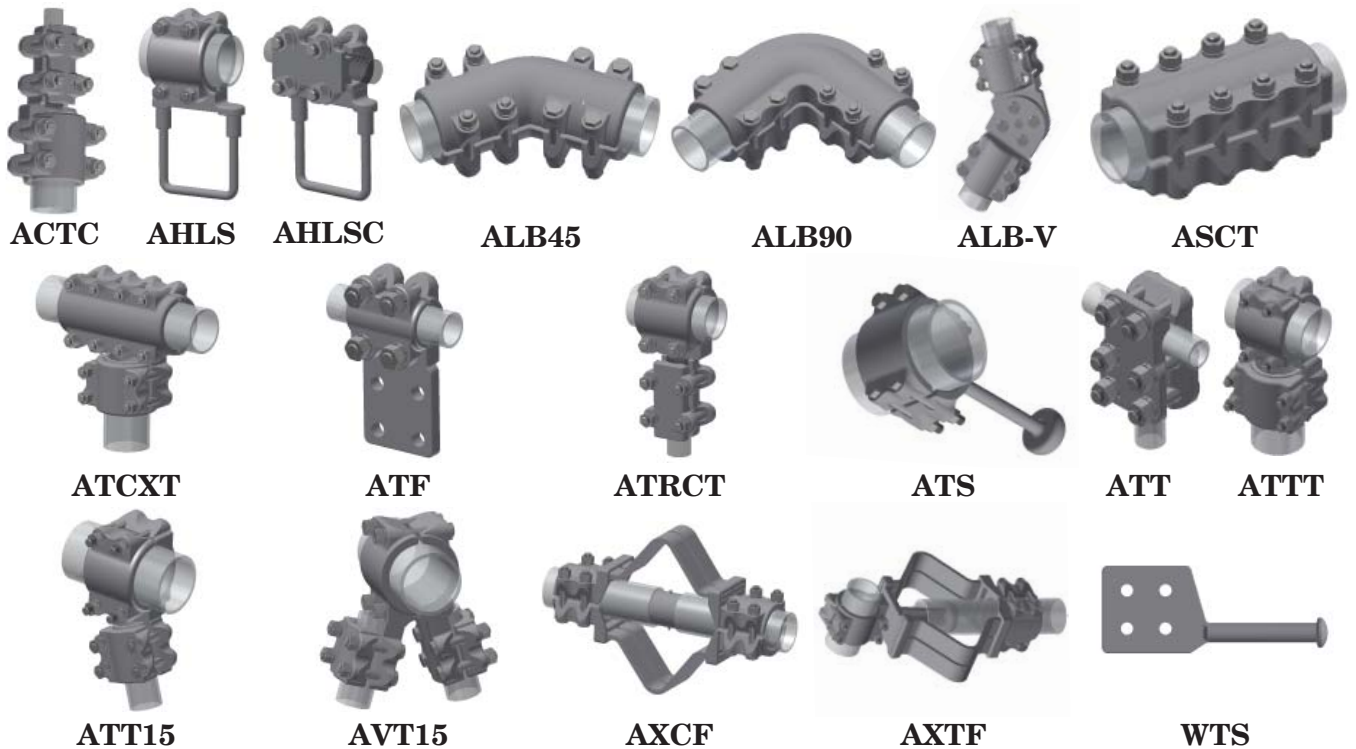
ALUMINUM

TEES, COUPLERS, MISC

WELDED PIPE



BOLTED PIPE



ALUMINUM

TEES, COUPLERS, MISC

BOLTED CABLE



ACCC



ACF



ACRCT



ACTC



APGC



ASPC



PUAL

MISC



AA-1156



AA-1467



AFX



AFX90



ASIW



ASIWP



ASUA



ASUA2



ATP



GSAL2N-4



HA3/HA5



WRLA

ALUMINUM TERMINALS

WELDED PIPE



WFT



WFTC



WFTI



WFTIC



WFTIR



WFTIW



WFTO



WFTOC



WFXIW



WFXT



WFXTC



WFXTC-V



WSFFT



WSFFT90

WELDED CABLE



WFC



WFC2

BOLTED PIPE



AFNT



AFNT90



AFNTC



AFXT



AFXT-V



AFXTO



ASFFT



ASFFT90

BOLTED CABLE



AFNC



AFNC2



AFNC3



AFNC90

ALUMINUM STUD CONNECTORS



ASCC



ASCC90



ASFF



ASFFT



ASFFT90



ASTR



ASTT



ASTT90



ASXR



ASXR2



ASXTR



WSFFT



WSFFT90



WSTR



WSXTR

EHV

BUS SUPPORTS

WELDED PIPE



ASWH-EHV



WCTI-EHV



WRTIHV WRTIHV2



WSTIHV



WVTSI-CS



WVTI-CS



WXCCI



WXCTO-CS

BOLTED PIPE



ARTIHV



ASTIHV



ASTIHV-R

BOLTED CABLE



ASCA3



ASCAHV



AVCAD



AVCA-HV



AVCHV

EHV

TEES, COUPLERS, MISC

WELDED PIPE



WBCHV



WEPC



WETC2



WFTD



WFTT-HV



WFVT-HV



WLBI-HV



WSC

WSR



WSTC3



WTF

WTFR-HV



WTTC3



WTCC



WXCCF



WXCF-CS

BOLTED PIPE



ACTCHV



ALBHV-V



ASCTHV



ATFHV



ATFRHV



ATTHV



ATTHV-15



AVTHV-15

EHV

TEES, COUPLERS, MISC

BOLTED CABLE



ACFHV



ACF2HV



ACFHV2



ACRCT-HV

MISC WELDED



WGSTE



WGSTH



WTC

MISC BOLTED



ABGSH



ASBC3



ASBC4



ASPC ASPC-4B



ASPCHV



GHJK-DAMP

EHV TERMINALS

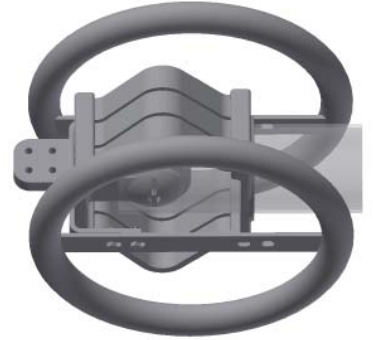
WELDED PIPE



WFCCH



WFCCV



WFRTC-V



WFTCHV



WFTICHV



WHV-FXT



WFXTC-V-CS

WELDED CABLE



WFC2HV



WFCHV

BOLTED PIPE



AFNTCHV

BOLTED CABLE



AFNCHV

MISC



AA-1094



AA-1207



AA-1520



ADPHV-4B



AFBH



AFBV



AFN3HV

EHV

STUD CONNECTORS



AS3N90



ASN3HV



ASNF2HV



ASNFHV



ASNFHV90



ASNFHV-BR



WSXHV



WSXTRHV

BRONZE

BUS SUPPORTS

BOLTED PIPE



ASTI-BR



CCTI



CN



CXTI



SCTI



SVTI

BOLTED CABLE



CJ



SCRI



SCRI 2

BRONZE

TEES, COUPLERS, MISC

BOLTED PIPE



ATT15-BR



AVT15-BR



BTS



CCT



CXT



HLS



LB45



LB90



TFT



TTHT



TTT

PIPE & CABLE



BSA



ETRCT



TASP



TTRCT



TTRDT

MISC



CFX



CFX90



DP-BR

BRONZE

TEES, COUPLERS, MISC

BOLTED CABLE



ACCC-BR



ASPC-BR



BCGS



BCS



BCSS



CSPC



FNSS



FNXR



GCK



GFCS



GLT-12



HLSC



OGC



OGP



PAU



PDC



PGC2



PL



PT



PU



PA



SXR



SXR2



TCRCT



TDRCT



TFC



TXR



UMX

BRONZE

TERMINALS

BOLTED PIPE



FNTT



FNTT90



FN TTC



FNXT



SFFT



SFFT90

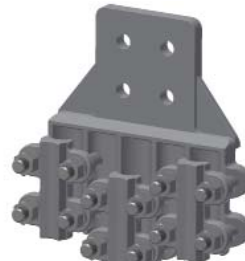
BOLTED CABLE



FNCT



FNCT2



FNCT3



FNCT4



FNCT90



FNSS



FNXR



GLT-12



SXR



SXR2



UK



UKG



UKL



UMX



UN



UNN

BRONZE

STUD CONNECTORS



SATA



SAX



SAX2



SCC



SCC2



SCC90



SFFT



SFFT90



SHN



SNFT



SNFT90



SNFV



SNX



STT



STT90



SXR



SXR2



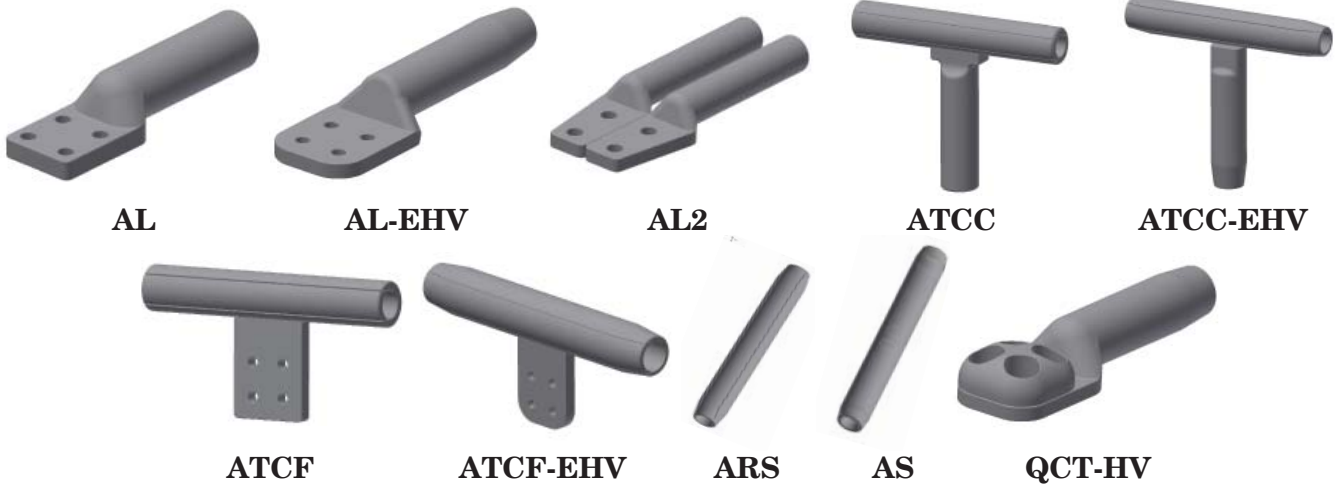
SXT



SXT90

ADDITIONAL COMPRESSIONS

ALUMINUM



AL

AL-EHV

AL2

ATCC

ATCC-EHV

ATCF

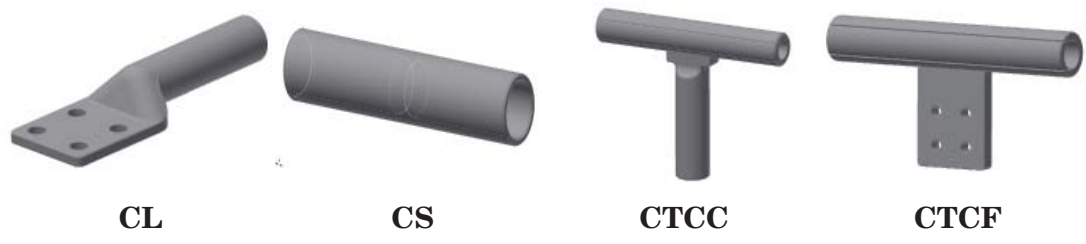
ATCF-EHV

ARS

AS

QCT-HV

BRONZE



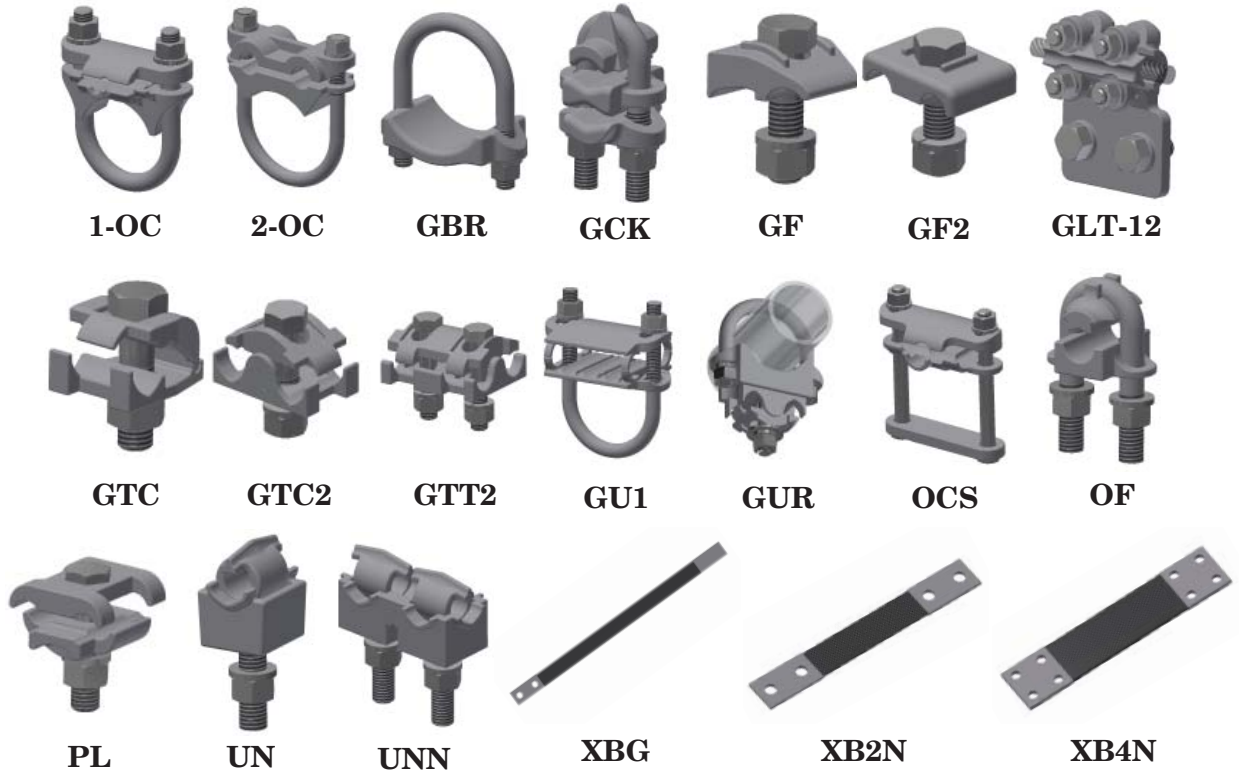
CL

CS

CTCC

CTCF

GROUNDING



1-OC

2-OC

GBR

GCK

GF

GF2

GLT-12

GTC

GTC2

GTT2

GU1

GUR

OCS

OF

PL

UN

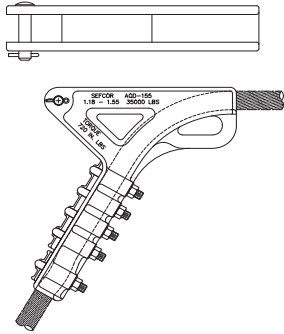
UNN

XBG

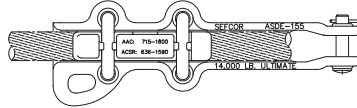
XB2N

XB4N

STRAIN HARDWARE



AQP*



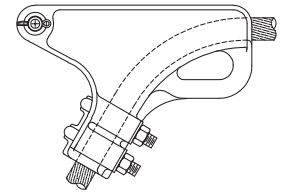
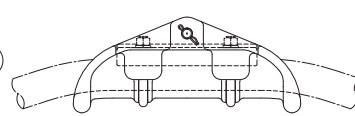
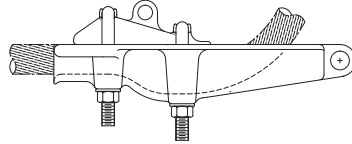
ASDE*



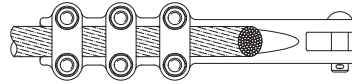
ACFS*



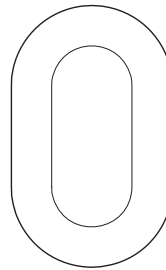
FQD*



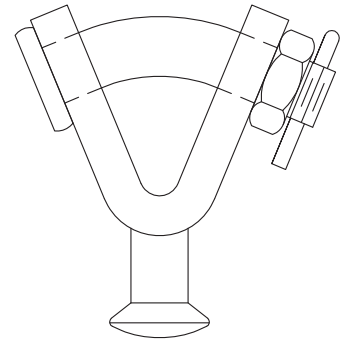
BCS*



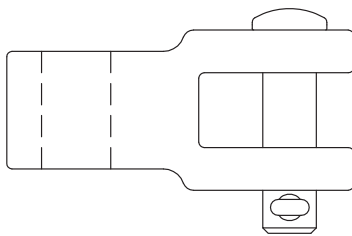
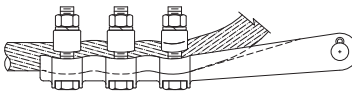
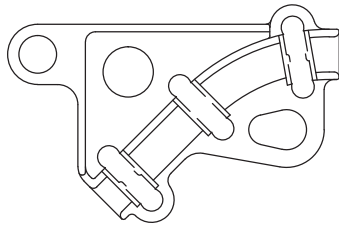
BCSS*



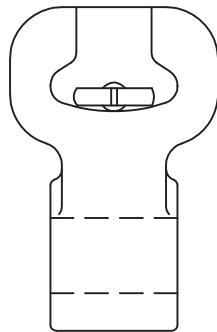
AH-1226



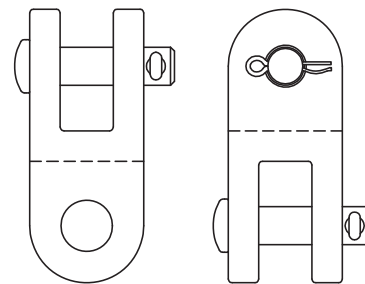
AH-1223



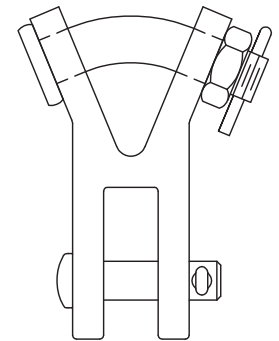
AH-1205



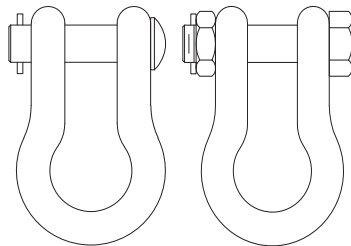
AH-1206



AH-1225

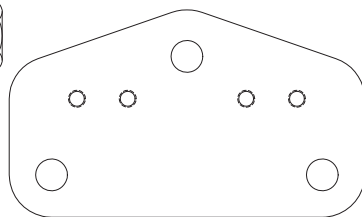


AH-1227

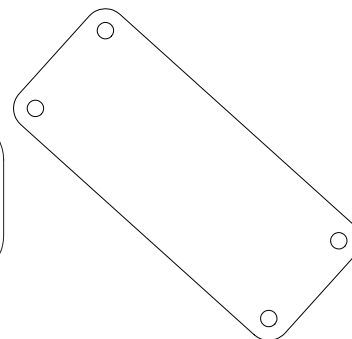


AH-1221

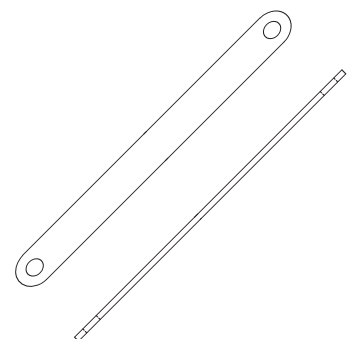
AH-1221-BNC



BP-2402



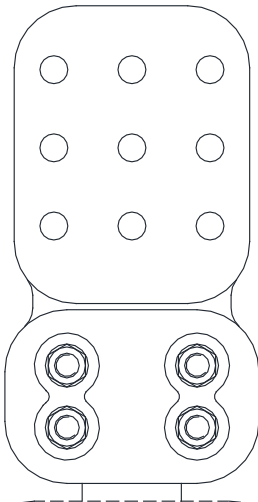
BP-2531



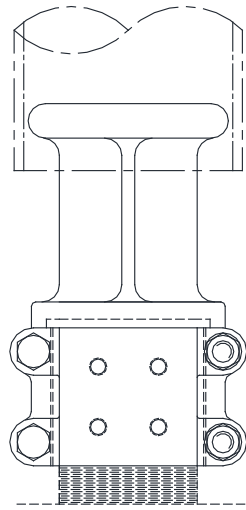
ES-10-69-24

* can be shipped with clevis-eye (-CF) or socket-eye (-SF) attached.

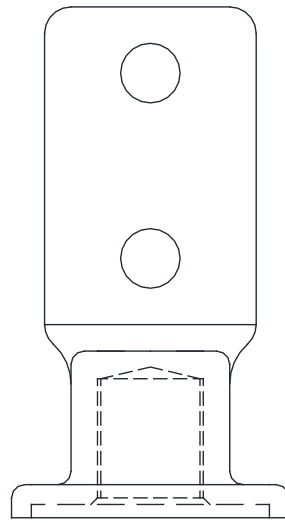
SPECIALTY



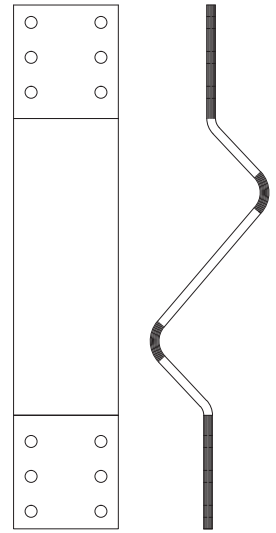
ASNFHV-54-9A-BR-SP



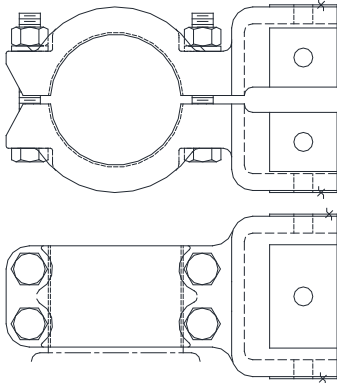
BA-3257



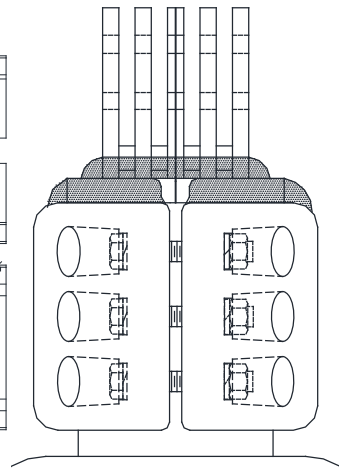
SNFT-27-2B-SP-ETP



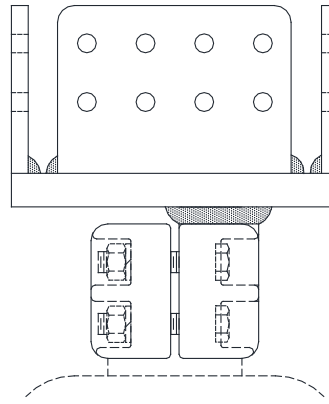
CFX-6B-SP2



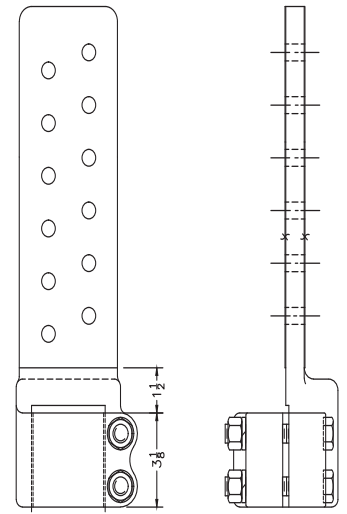
BA-3197



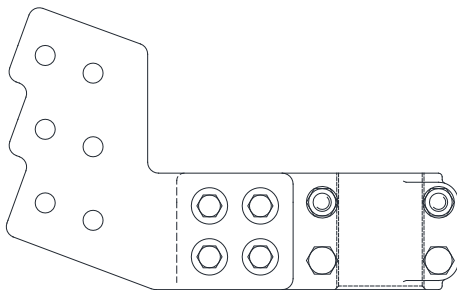
BA-3046



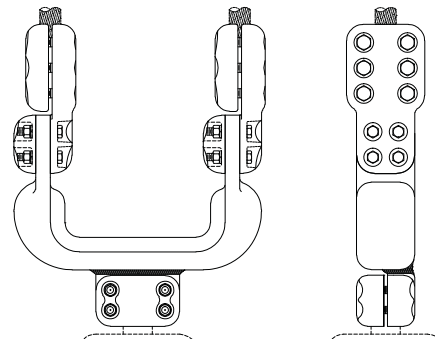
BA-3041



SNFT-61-12BV20RSND



BA-3055-1



ASNF2HV-SV-5449-SP



Making Connections Since 1971

SERVICE • QUALITY • INNOVATION • TECHNICAL SUPPORT

1150 Uniform Road
Griffin, Georgia 30224
Telephone: 770-227-8297
Fax: 770-229-5120
frontdesk@sefcor.com
www.sefcor.com
Made In The U.S.A.